



Transforming
great ideas into
great customer
experiences



At Crestron, we don't just build products; we build automation and control solutions for buildings and homes. All of our products are designed, built and guaranteed to work together as a complete system, rather than a collection of unrelated parts housed in technology silos. Our solutions lower costs and boost efficiency. They provide greater comfort, convenience, and security.





Building the technology that integrates technology






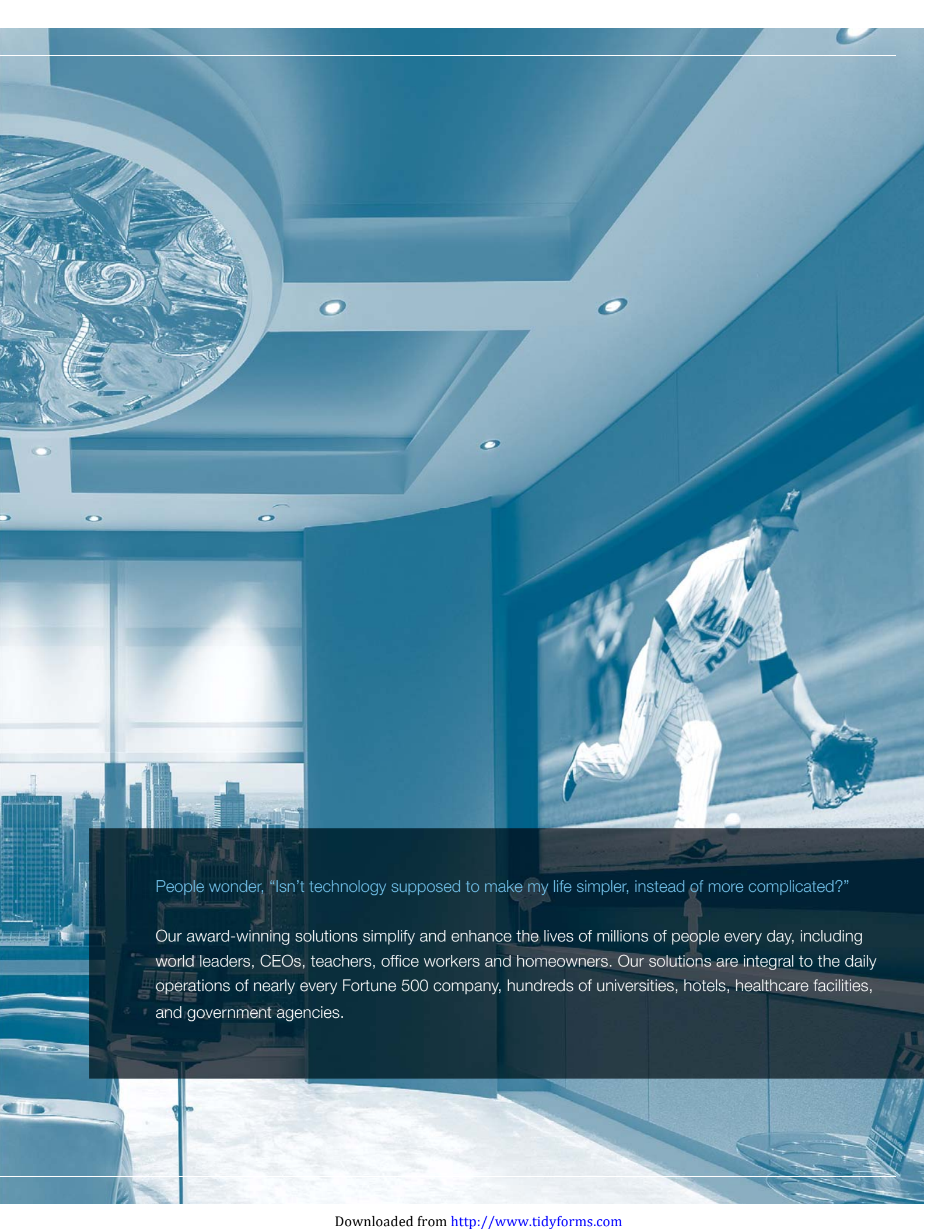
The amount of technology in buildings and homes is rapidly growing and changing. The most significant change is that everything is now on the network: audio, video, voice, data, lighting, security, digital signage, Building Management Systems (BMS), shades, and heating & cooling systems. The design and implementation of these technologies, however, is typically done independently. As a result, each one operates on a separate platform, adding many layers of complexity and inefficiency.

Crestron builds the technology that integrates all of the disparate systems and devices in buildings and homes on a single open platform so they can communicate and work together intelligently. We provide the only solution that enables you to monitor, manage and control everything from one platform, anywhere, anytime, using touch screens, remotes, and smart devices.



A modern interior space featuring a large, dark leather sofa and several matching armchairs. The room has a high ceiling with recessed lighting and a large, ornate circular light fixture. A floor lamp with a thin metal pole and a circular base is positioned near the sofa. Large windows in the background offer a view of a city skyline with numerous skyscrapers. The entire image is overlaid with a semi-transparent blue filter.

Improving quality
of life at home,
at work, at school,
at play



People wonder, "Isn't technology supposed to make my life simpler, instead of more complicated?"

Our award-winning solutions simplify and enhance the lives of millions of people every day, including world leaders, CEOs, teachers, office workers and homeowners. Our solutions are integral to the daily operations of nearly every Fortune 500 company, hundreds of universities, hotels, healthcare facilities, and government agencies.



Solutions for all markets

Our solutions have been shaped by more than four decades of innovation. We've evolved across many industries, gaining strength and expertise through their diversity. Our focus on meeting the needs of our clients to help them succeed is evident in our enduring presence in these markets.





Corporate

Education

Healthcare

Hospitality

Government


Residential

Entertainment Venues

Luxury Transportation

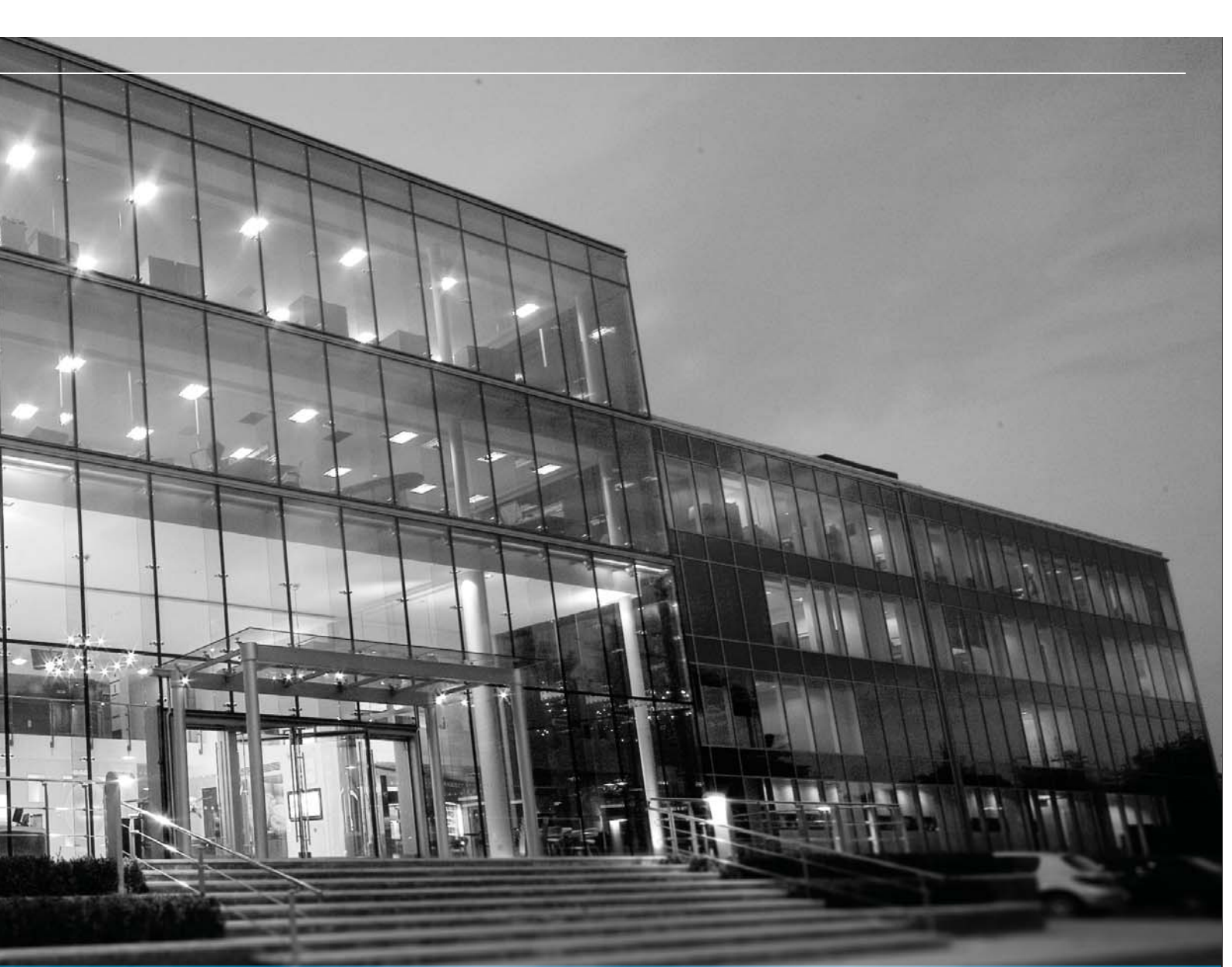
Retail Spaces





Crestron 3-Series™ Control Systems provide an open architecture, scalable, IP-based platform for implementing fully integrated building management and automation. These network grade appliances unify the entire Crestron ecosystem. Our Ethernet switches connect all systems and devices to our control system on the managed network, requiring just one IP address.

Crestron Control Systems feature native SNMP support for enterprise level IT management software suites and BACnet®/IP support for integration of HVAC and BMS systems, including ventilation, lighting, power, fire, shades, elevators and security. All systems run independently and communicate with each other on the same platform, creating a truly smart building or home.



The core of the
**intelligent
building**

One world view



CIOs and facility managers ask, “Why can’t we see and manage everything together, instead of having to use multiple applications? Why can’t we monitor everything going on in every room in every building from one platform? Why does my support staff have to scramble from building to building to fix problems?”

The **Crestron Fusion™ Enterprise Management** software suite, together with 3-Series Control Systems, revolutionizes the way organizations control every aspect of their day-to-day operations. Fusion makes it possible to monitor and manage AV equipment, Building Management Systems, room scheduling, lighting, shades, climate, and energy consumption in real-time, all from a single dashboard. Fusion RV™ (RoomView®), Fusion EM™ (Energy Management) or both can be deployed, based on needs.

Fusion RV software enables facility and IT managers to centrally monitor, manage, support and maintain resources in every room from the help desk. They can track equipment usage to schedule preemptive routine maintenance, reducing tech support cases. They can provide real-time remote technical support and receive instant alert notifications on any web-enabled computer, mobile device, or touch screen when service is required, minimizing downtime.

Robust reporting features in Fusion RV provide data to help managers make more effective purchasing decisions, as well as maximize efficient room usage and availability. Built-in room scheduling empowers end users to schedule meetings and book rooms from any computer or from a touch screen conveniently mounted outside each room.

Fusion EM software enables facility managers to monitor renewable and sustainable energy sources in real-time, as well as view detailed historical usage data. It provides environmental control, including lighting, shades, and climate to intelligently integrate with room scheduling and occupancy levels for greater energy savings. Fusion EM can also track carbon footprint and energy consumption to help managers make quantifiable decisions to help reduce operating expenses.

A black and white photograph of a modern building's exterior. The word 'CRESTRON' is mounted in large, raised, sans-serif letters on the upper part of the facade. Below it, the word 'RESEARCH' is partially visible in similar lettering. The building has a curved section and large glass windows. A blue semi-transparent rectangle is overlaid on the lower left portion of the image, containing white text.

CRESTRON

RESEARCH

22

A partner you can trust

We've been leading the way in automation and control technology for over four decades. We've experienced sustained organic growth, evolving from a pioneer in AV and control systems to a world-class enterprise management company providing solutions to a broad spectrum of world-leading organizations. They decided their investment is safe with us. Yours will be, too.



Maximizing return on facilities investment

Facility managers at world-leading companies are benefitting from powerful room scheduling and asset management software such as Crestron Fusion. Integrated network scheduling tools with reporting capabilities significantly increase efficiency and productivity. Large organizations, such as Microsoft, collect data through Crestron Fusion software and generate reports that enable intelligent management decisions. Based on the analysis of this information, facility planning, and equipment purchasing may be modified to meet the demand of the user communities. By standardizing on Crestron hardware and software solutions across their global enterprises, some companies realize millions of dollars in savings across several disciplines, including programming charges, AV costs, negotiated hardware pricing, construction, maintenance and personnel.

Improving communications and productivity

To support their missions and programs, global organizations, such as World Bank, maintain campuses with multiple office buildings and hundreds of meeting rooms with audio/video systems. New or upgraded systems are added quickly and easily. The implementation of Crestron control and scheduling systems helped these organizations improve communications, increase the efficiency and productivity of their staff and members, and minimize the environmental impact of their facilities.

Redefining the “guest experience”

Upscale resorts in Las Vegas and around the world, such as MGM Resorts International, are setting a new standard in luxury accommodations. Among their amenities are Crestron systems in guest rooms, meeting rooms and public areas that go far beyond anything previously installed. Crestron integrates these resorts' building and room systems, including lighting, HVAC, BMS, event scheduling, AV, door locks, mini bar, shades and drapes. Crestron has enabled the resorts to create an experience that keeps guests coming back. Even better, we've enabled them to simplify system monitoring and maintenance and realize millions of dollars in savings over the cost of installing and managing separate systems.

Standardization of technology

Educational institutions, such as The Wharton School, want to standardize their automation technology to increase productivity and efficiency while reducing operational costs. Recognizing only Crestron could offer a complete, end-to-end control solution, they standardized on 3-Series controllers and Fusion software across the enterprise.



Control systems

Crestron control systems are the core of the intelligent building. They unify all technology and devices in the building on one network grade appliance and one network address.



Network appliances

Our switches connect Ethernet devices to our control systems, which connect to the managed network using just a single IP address.



Digital audio

We offer a complete line of digital HD audio distribution systems, high-powered IP-addressable and audiophile grade amplifiers, 7.3 HD Surround Sound Processors, and high-performance in-wall and in-ceiling speakers.



Digital video

The Crestron heritage of high-performance video products continues in our digital video presentation and distribution systems, multi-window video processors, streaming video and videoconferencing solutions, video scalers, and home theater systems.



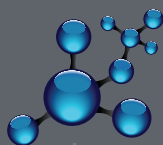
User interfaces

Crestron solutions can be conveniently monitored, managed and controlled from our wide selection of intuitive, stylish touch screens and remotes, as well as from Mac® and Windows®-based laptops and all Apple® and Android™ smart devices.



Enterprise Management Software

From a single dashboard, Fusion enables organizations to monitor and manage AV resources, room scheduling, environmental systems and energy usage for one building or an entire global enterprise. Fusion unifies all technology to increase efficiency, productivity, and energy savings.



Infrastructure

The importance of cables, the conduit through which signals are transported, is often overlooked. Crestron has engineered its own line of structured wire, AV cables, and multimode and single mode fiber, ensuring optimal performance and reliability, even in changing environmental conditions, as well as a path for future upgradability.



Automation sensors

Crestron temperature and occupancy sensors add another layer of automation and energy savings, making buildings as intelligent, comfortable and efficient as possible. Our photocell sensors are designed for daylight harvesting applications, controlling room lighting based on the presence of natural daylight.



Lighting & shading systems

Crestron lighting and shading systems provide precise control of artificial and natural light to create aesthetically pleasing and comfortable environments, as well as optimize energy savings through daylight harvesting and automated demand response.



HVAC

Our wired and wireless programmable thermostats communicate with HVAC systems, lighting, and shades to deliver holistic environmental control.

Products that work together intelligently

Our products seamlessly integrate to manage and control all the technology in buildings and homes.





Products Integrated by Design

Our products are purpose-based and engineered to work together as a single system. Our extensive product line enables us to design the perfect solution for any environment or application.



1991

1st graphical programming language and tool set

2001

1st modular touch screen control system - Isys®

1993

1st color, video, computer graphics touch screen

1995

1st RF wireless control system - SmarTouch™

1998

1st IP-based control system

1999

1st Internet-based control technology - e-Control®

Growth through innovation

You don't earn countless product innovation awards without great ideas, great people, great resources, and key partnerships. Our offices and research labs are home to hundreds of engineers and visionaries with a passion and relentless commitment to push the boundaries of what's possible.

We've cemented and extended our leadership position by forging deep, long-standing partnerships with the world's technology giants, such as Apple®, Cisco Systems®, Microsoft®, Intel® and Texas Instruments®, working together to conquer technology challenges.

2003

1st touch screen emulation technology for PDA, Web tablets, and computers
- e-Control 2

2010

1st single-wire digital/analog AV transport technology over CAT5e or fiber

2012

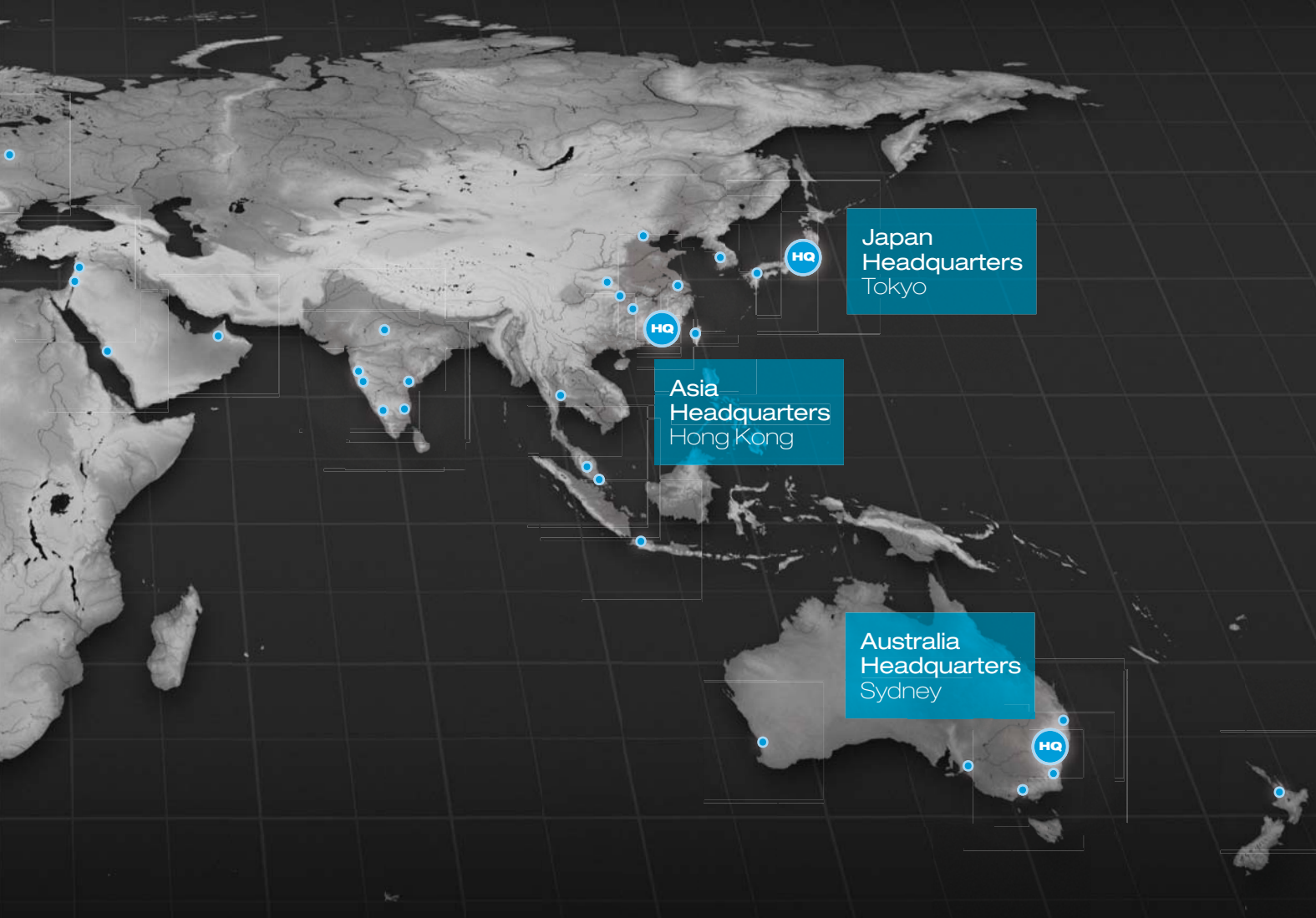
1st control and management platform natively supporting AV, SNMP and BACnet™/IP



Latin America
Headquarters
Mexico City

World
Headquarters
New Jersey

EMEA
Headquarters
Brussels



Global presence, local support

Crestron has offices in every major market and country around the globe. Each is fully staffed to provide sales, technical support and training, ensuring an identical customer experience wherever you are in the world.

It's after the sale that
a company reveals its
true colors



Crestron has a vast network of thousands of trained and certified engineers, technicians, designers, and consultants ready to assist customers. Our award-winning True Blue Service and Support Team, an elite group of dedicated, on-call engineers and customer support representatives is available 24/7 and ready to be on-site, anywhere in the world, if needed.

We train our partners to be the best with a comprehensive certification program that ensures flawless implementation and the highest quality support. Crestron Technical Institute (CTI) has trained and certified tens of thousands of professionals worldwide.





Emergency Operations/Training Center Minneapolis, MN



After the I-35W bridge collapse into the Mississippi River in 2007, the Federal Emergency Management Agency (FEMA) studied the response by the City of Minneapolis. While they concluded that the police, fire and other agencies had handled the situation well, they recommended the construction of a larger unified emergency operations center. They turned to Crestron.

At the heart of the city's new Emergency Operations/Training Center (EOTF) is a multiple award-winning sophisticated audio/video monitoring and communications system based on Crestron DigitalMedia and Crestron control technology.

For more information, visit crestron.com

World Headquarters

15 Volvo Drive
Rockleigh, NJ 07647
800.237.2041
201.767.3400
crestron.com

EMEA Headquarters

Oude Keerbergsebaan 2
2820
Rijmenam
Belgium
Phone: +32.15.50.99.50
crestron.eu

Asia Headquarters

Room 2501, 25/F, Westin Centre
No. 26 Hung To Road
Kwun Tong
Hong Kong
+852.2341.2016
Video Ph: +852.2373.7530
crestronasia.com

Japan Headquarters

1736-3 Higashitsuda-Cho
Matsue City 690-0011
Japan
Phone: +81.852.60.5185
crestron.jp

Latin America Headquarters

Blvd. Manuel Avila Camacho No 37-1A
Col. Lomas de Chapultepec
CP 11560 México DF
Phone: +55.5093.2160
crestronlatin.com

Australia Headquarters

1 Clyde Street
Silverwater NSW 2128
Australia
Phone: 612.9737.8203
crestron.com.au



Products manufactured in the United States. Printed in USA D4539_2013-04

Crestron, the Crestron logo and other trademarks, registered trademarks, and trade names may be used in this document refer to either the entities claiming the marks and names of their products. Crestron disclaims any proprietary interest in the marks and names of others. ©2012 Crestron Electronics, Inc.