

# African Elephant

The African Elephant Fact Sheet Template offers a concise yet thorough overview, detailing key aspects of this majestic species, making it an informative resource for education purposes

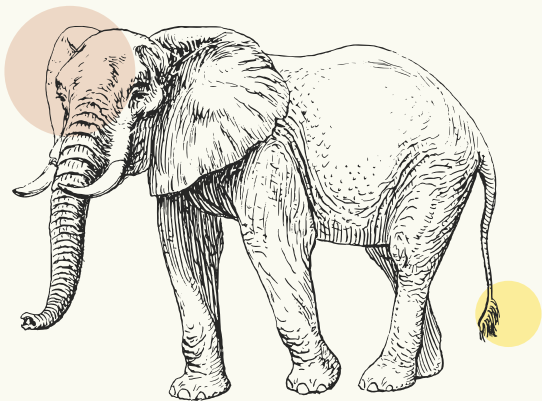
## Species Information

**Common Name:** African Elephant

**Scientific Name:** Loxodonta Africana

**Classification:** Mammal

**Habitat:** Predominantly savannas, forests, and grasslands in Africa



## Physical Characteristics

**Length:** Approximately 20 feet

**Height:** Around 10 feet at the shoulder

**Weight:** 8,000 to 12,000 pounds

**Color:** Typically grey with variations in shades and patterns

## Behavior and Social Structure



Herbivorous, grazing on grasses, leaves, and fruits



Lifespan can reach up to 70 years



Highly social, living in groups led by matriarch

## Biological Replication Process

### Gestation Period

The gestation period for African Elephants typically spans about 22 months, marking one of the longest among land mammals

### Calf Birth Weight

Newborn African Elephant calves typically weigh about 220 pounds, showcasing their robust nature from birth admirably

## Interesting Facts

- 1 African Elephants are the largest land animals on Earth
- 2 They use their trunks for various tasks, including breathing, drinking, and grasping objects
- 3 Elephants are known for their intelligence, emotional depth, and strong social bonds

## Conservation Status

IUCN Status

Vulnerable

Threats

Poaching for ivory, habitat loss, human-wildlife conflict

## Conservation Efforts



Protection of natural habitats



Anti-poaching initiatives



Community conservation programs